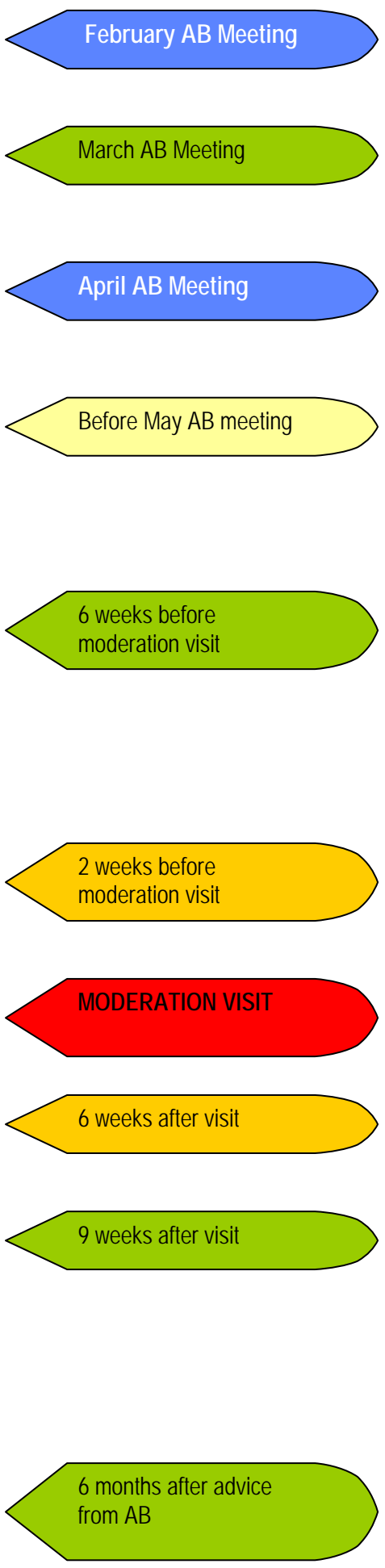
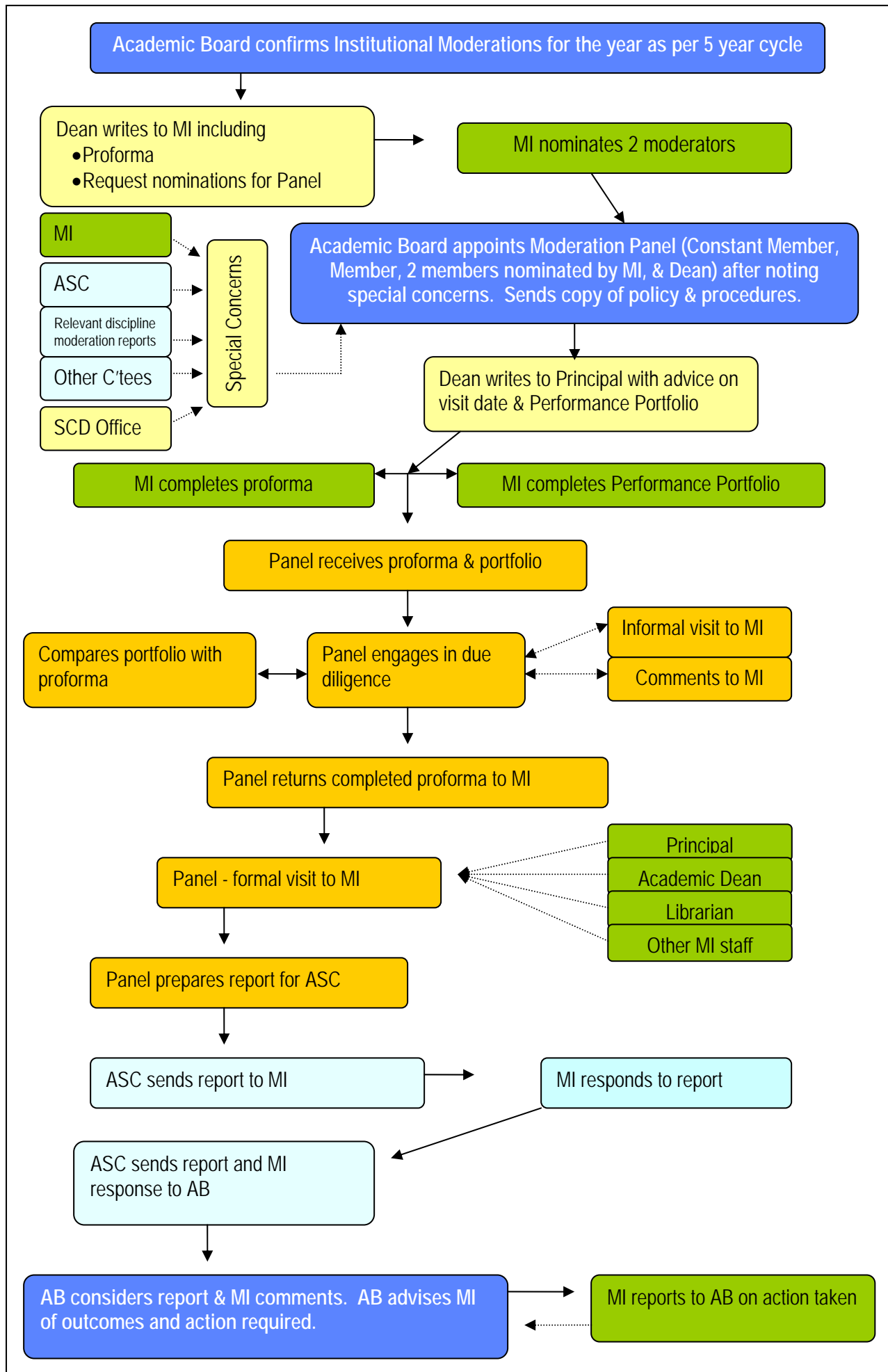


# Institutional Moderation Flow Chart



INSTITUTION	NEXT MODERATION (4 YR CYCLE)
St Andrew's Greek Orthodox Theological College	2009
Nazarene Theological College	2009
Broken Bay Institute	2010
Southern Cross College	2010
Australian College of Ministries	2011
Catholic Institute of Sydney	2011
New South Wales College of Clinical Pastoral Education	2012
Emmaus College	2012
Booth College	2012

### LEGEND

- Action required by Academic Board
- Action required by Moderation Panel
- Action required by Dean or SCD office
- Action required by Member Institute
- Action required by Academic Standards Committee or other Committee
- Action that is discretionary or may not be required

.....→